

# DEL AIRE GOLF CLUB FIRST ADDITION

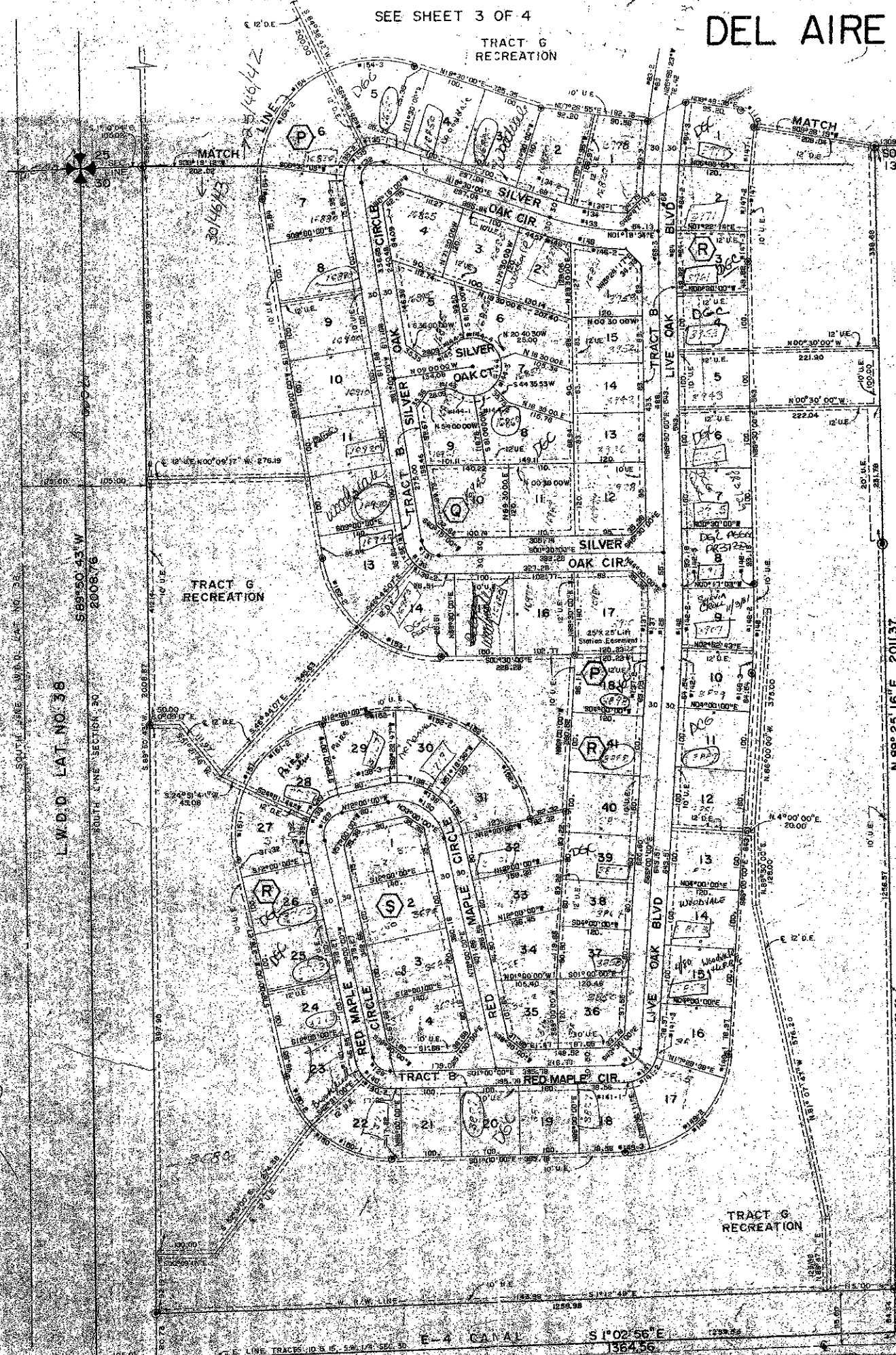
A PLAT OF A PORTION OF SEC. 25, TWP. 46 S,  
RGE. 42 E AND SECTION 30, TWP. 46 S, RGE. 43 E.

ALSO BEING A REPLAT OF A PORTION OF MODEL LAND  
COMPANY'S SUBDIVISION, AS RECORDED IN PLAT  
BOOK 6, PAGE 52, PUBLIC RECORDS OF PALM BEACH  
COUNTY, FLORIDA

PALM BEACH COUNTY, FLORIDA  
JOHN A. GRANT JR. INC. BOCA RATON, FLORIDA  
CONSULTING ENGINEERS & LAND SURVEYORS

SHEET 4 OF 4 APRIL 1978

166



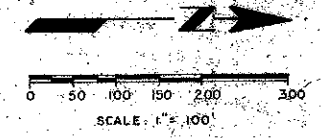
MODEL LAND CO.'S S/D  
PLAT BOOK 6, PAGE 52

N 89° 25' 16" E 2011.37

N. LINE TRACTS 10, 11, 8, 5, S.W. 1/4 SEC. 30

**CURVE TABLE**

NUMBER	RADIUS	ARC	DEL. TA	TAN	CHORD	CHORD BEAR.
66-1	1995.00	789.38	02°14'00"	408.00	787.00	S77°00'00"W
66-2	750.00	292.70	02°14'00"	149.00	291.00	S80°34'00"E
66-3	471.00	181.14	02°14'00"	94.00	180.00	S80°34'00"E
66-4	300.00	117.42	02°14'00"	62.00	117.00	S80°34'00"E
66-5	1716.00	665.82	02°14'00"	332.91	665.00	S77°00'00"W
66-6	101.00	37.70	02°14'00"	19.00	37.50	S77°00'00"W
66-7	104.15	38.28	02°14'00"	19.14	38.14	S77°00'00"W
66-8	104.15	38.28	02°14'00"	19.14	38.14	S77°00'00"W
66-9	104.15	38.28	02°14'00"	19.14	38.14	S77°00'00"W
66-10	104.15	38.28	02°14'00"	19.14	38.14	S77°00'00"W
66-11	104.15	38.28	02°14'00"	19.14	38.14	S77°00'00"W
66-12	104.15	38.28	02°14'00"	19.14	38.14	S77°00'00"W
66-13	104.15	38.28	02°14'00"	19.14	38.14	S77°00'00"W
66-14	104.15	38.28	02°14'00"	19.14	38.14	S77°00'00"W
66-15	104.15	38.28	02°14'00"	19.14	38.14	S77°00'00"W
66-16	104.15	38.28	02°14'00"	19.14	38.14	S77°00'00"W
66-17	104.15	38.28	02°14'00"	19.14	38.14	S77°00'00"W
66-18	104.15	38.28	02°14'00"	19.14	38.14	S77°00'00"W
66-19	104.15	38.28	02°14'00"	19.14	38.14	S77°00'00"W
66-20	104.15	38.28	02°14'00"	19.14	38.14	S77°00'00"W
66-21	104.15	38.28	02°14'00"	19.14	38.14	S77°00'00"W
66-22	104.15	38.28	02°14'00"	19.14	38.14	S77°00'00"W
66-23	104.15	38.28	02°14'00"	19.14	38.14	S77°00'00"W
66-24	104.15	38.28	02°14'00"	19.14	38.14	S77°00'00"W
66-25	104.15	38.28	02°14'00"	19.14	38.14	S77°00'00"W
66-26	104.15	38.28	02°14'00"	19.14	38.14	S77°00'00"W
66-27	104.15	38.28	02°14'00"	19.14	38.14	S77°00'00"W
66-28	104.15	38.28	02°14'00"	19.14	38.14	S77°00'00"W
66-29	104.15	38.28	02°14'00"	19.14	38.14	S77°00'00"W
66-30	104.15	38.28	02°14'00"	19.14	38.14	S77°00'00"W
66-31	104.15	38.28	02°14'00"	19.14	38.14	S77°00'00"W
66-32	104.15	38.28	02°14'00"	19.14	38.14	S77°00'00"W
66-33	104.15	38.28	02°14'00"	19.14	38.14	S77°00'00"W
66-34	104.15	38.28	02°14'00"	19.14	38.14	S77°00'00"W
66-35	104.15	38.28	02°14'00"	19.14	38.14	S77°00'00"W
66-36	104.15	38.28	02°14'00"	19.14	38.14	S77°00'00"W
66-37	104.15	38.28	02°14'00"	19.14	38.14	S77°00'00"W
66-38	104.15	38.28	02°14'00"	19.14	38.14	S77°00'00"W
66-39	104.15	38.28	02°14'00"	19.14	38.14	S77°00'00"W
66-40	104.15	38.28	02°14'00"	19.14	38.14	S77°00'00"W



P.R.M. Denotes Permanent Reference Monument  
P.C.P. Denotes Permanent Control Point  
U.E. Denotes Utility Easement  
D.E. Denotes Drainage Easement

Note: There will be no building, trees or shrubs placed on easements.

This instrument prepared by:  
John A. Grant Jr., John A. Grant Jr. Inc.  
3533 North Federal Highway, Boca Raton, Fla. 33451

1000-075  
37/168